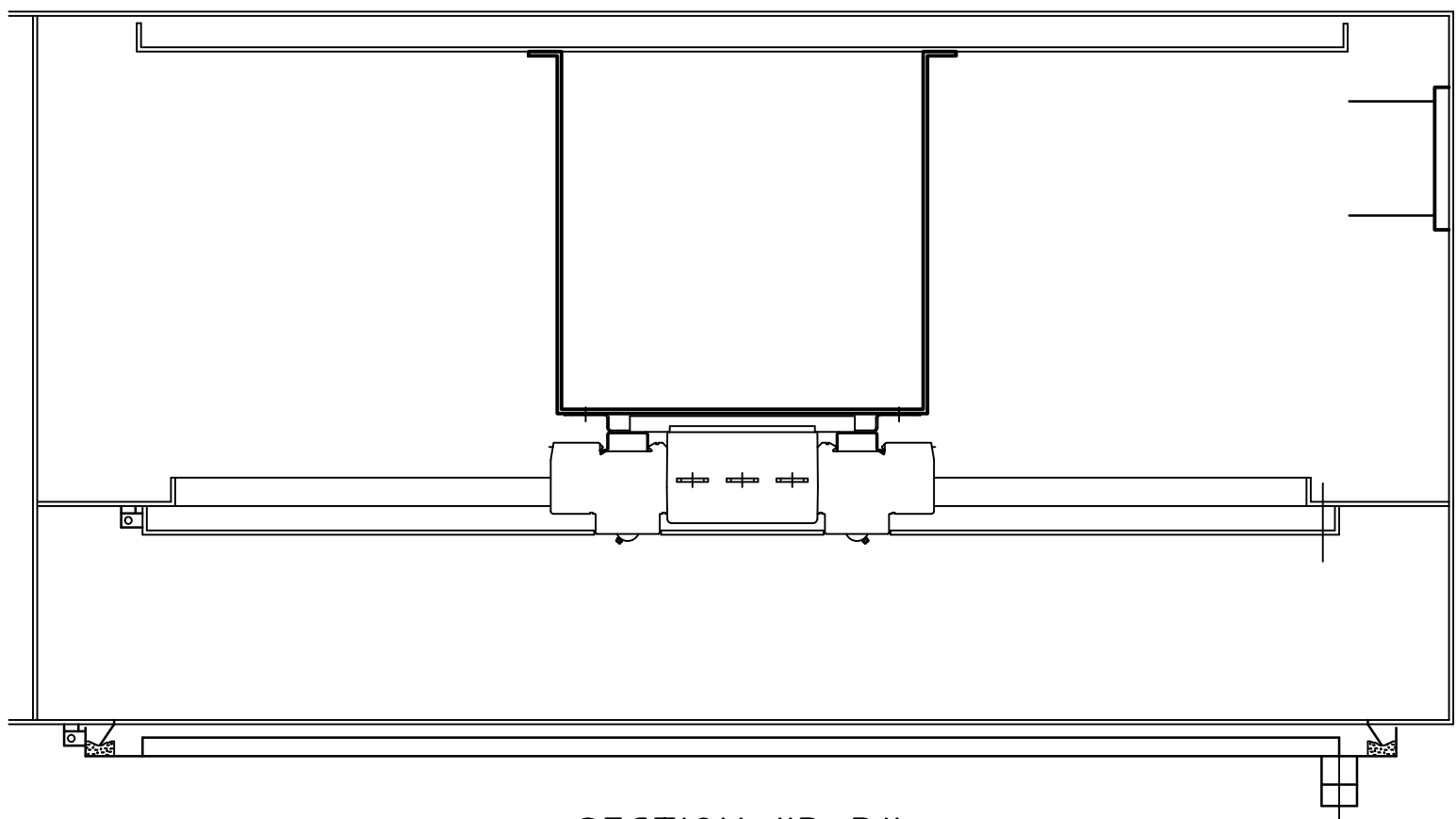
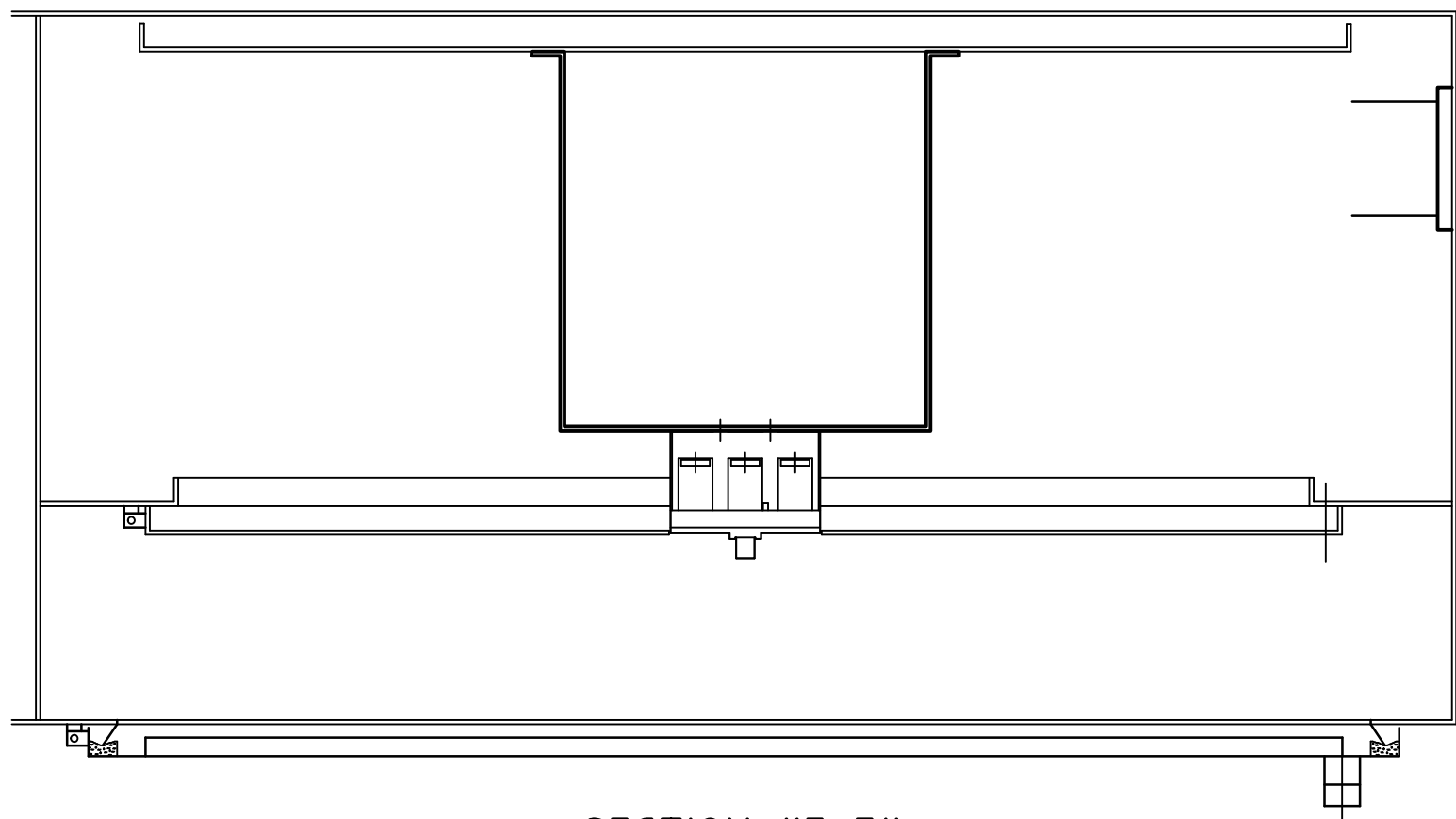


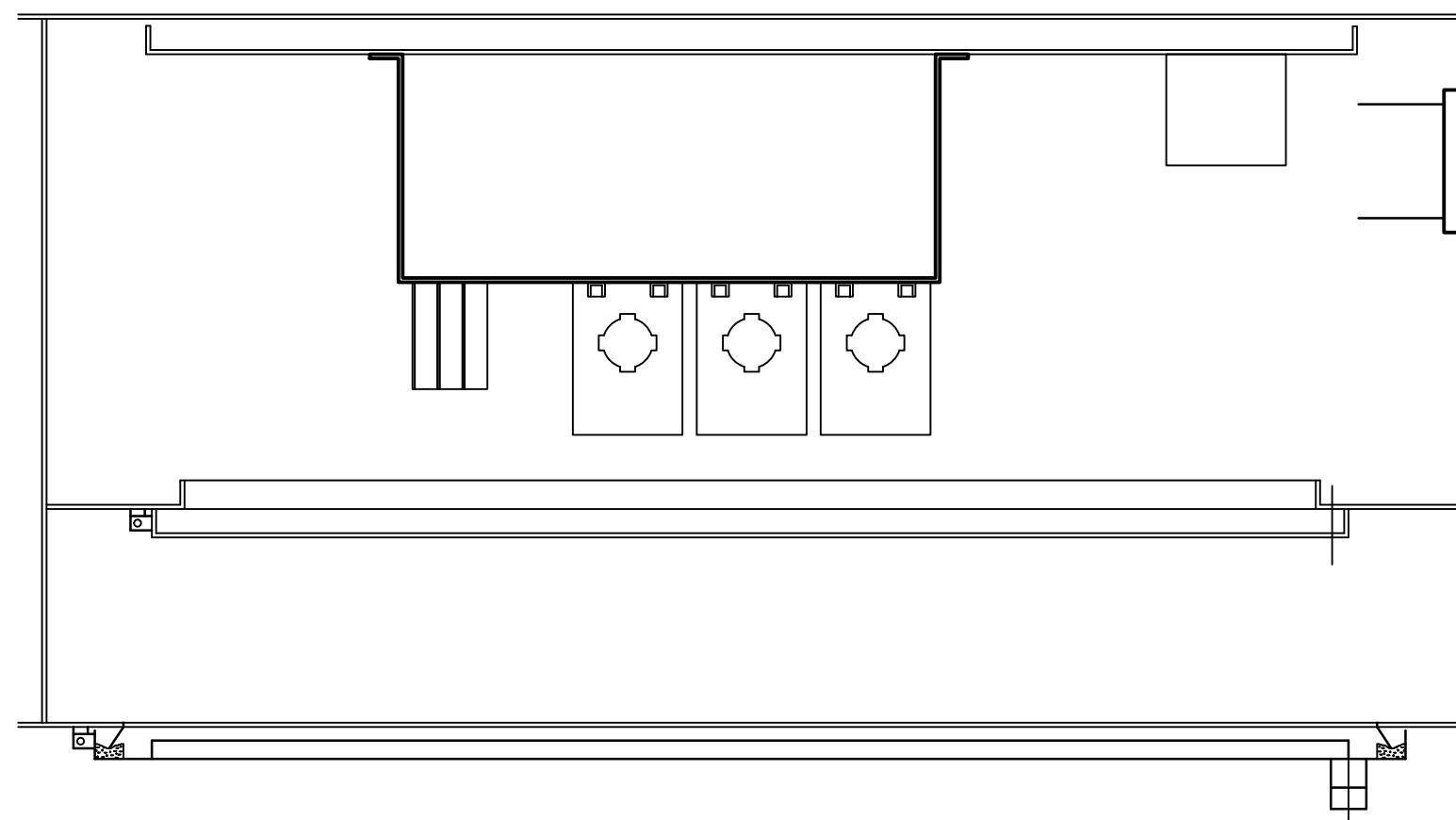
SECTION "B-B"



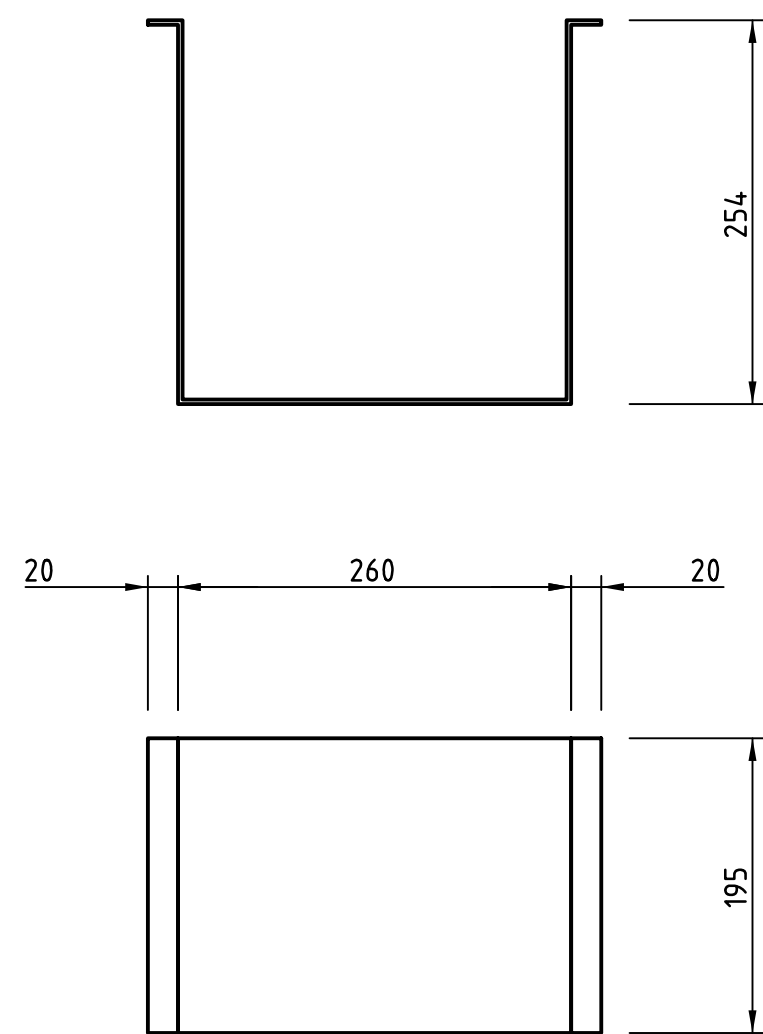
SECTION "D-D"



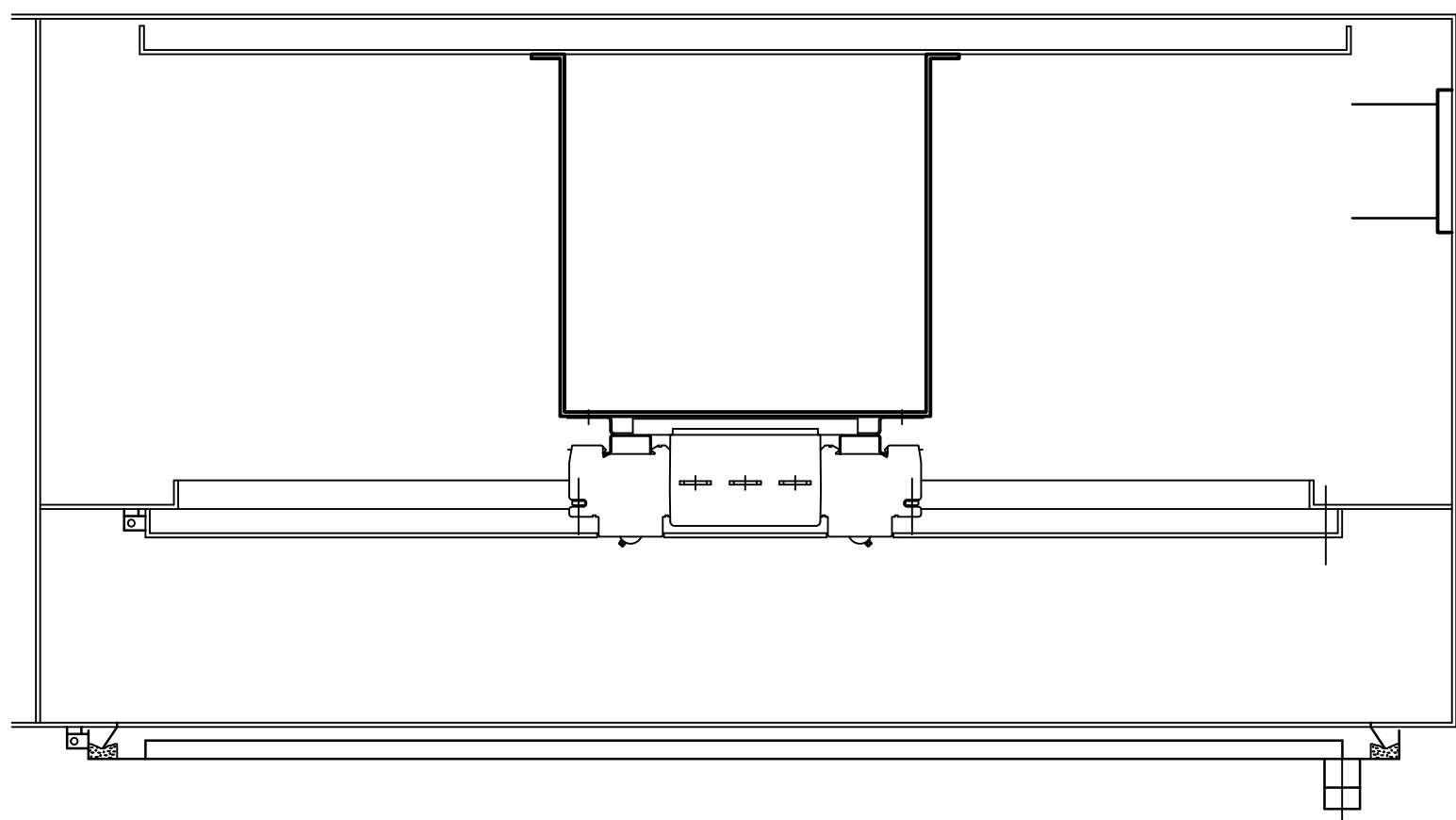
SECTION "E-E"



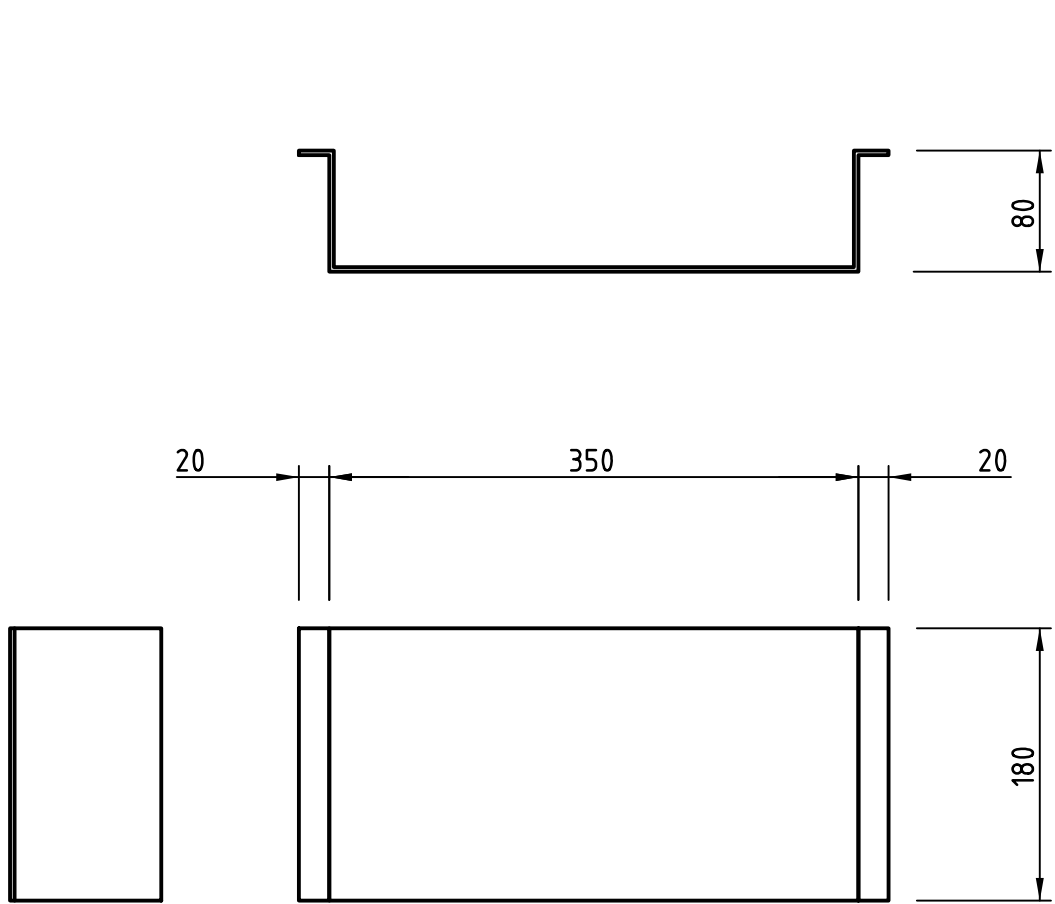
SECTION "C-C"



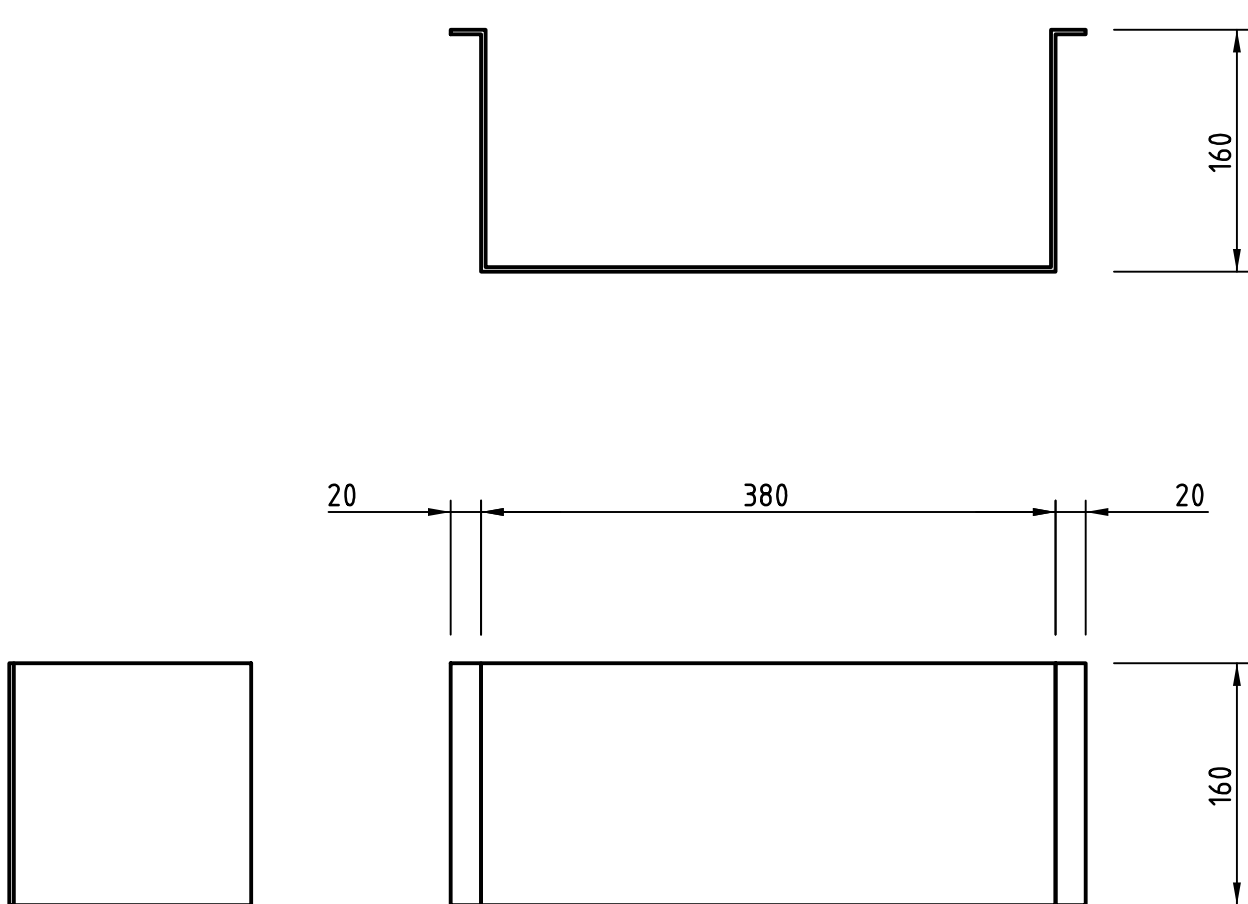
MAIN DISTRIBUTION COMPARTMENT -
DISTRIBUTION BOARD 1 TOP HAT DETAILS



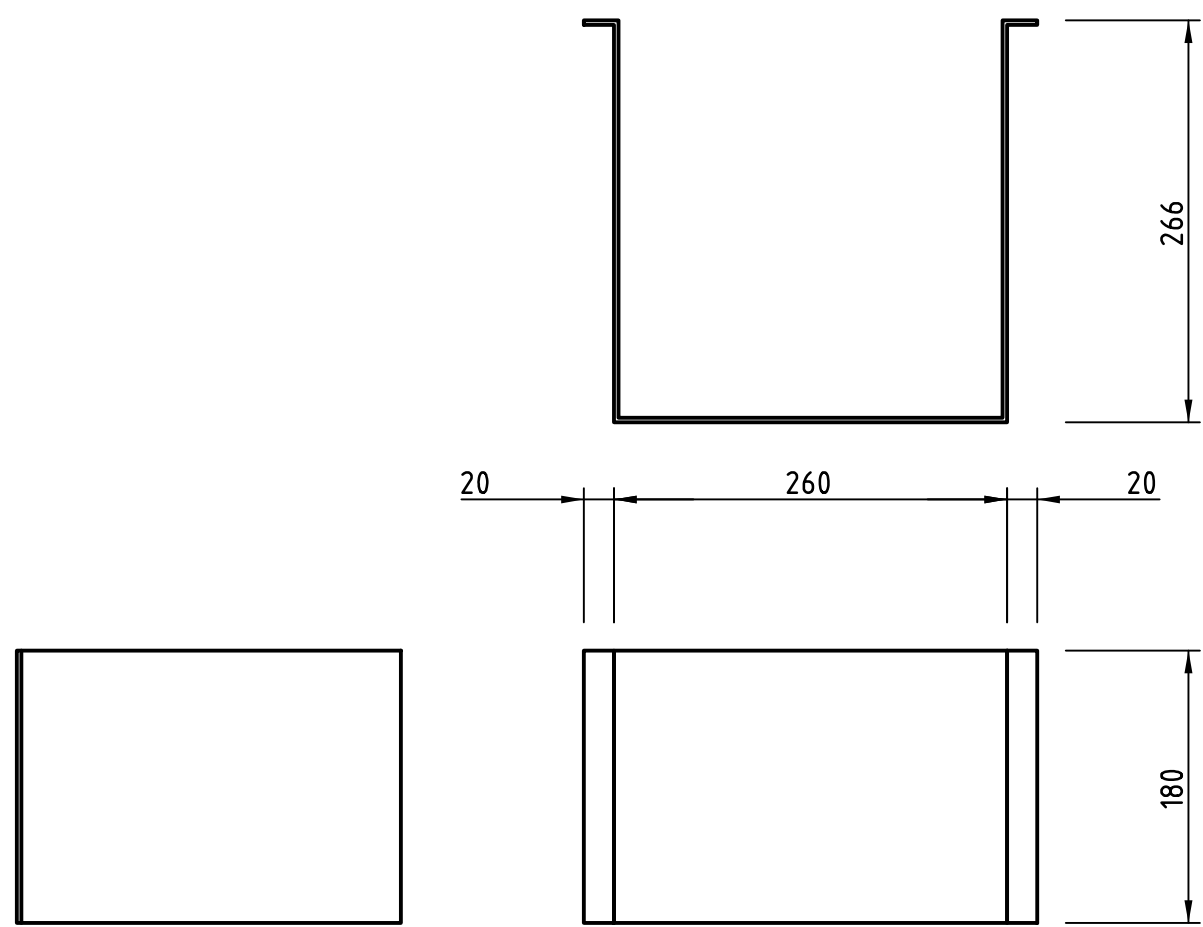
SECTION "F-F"



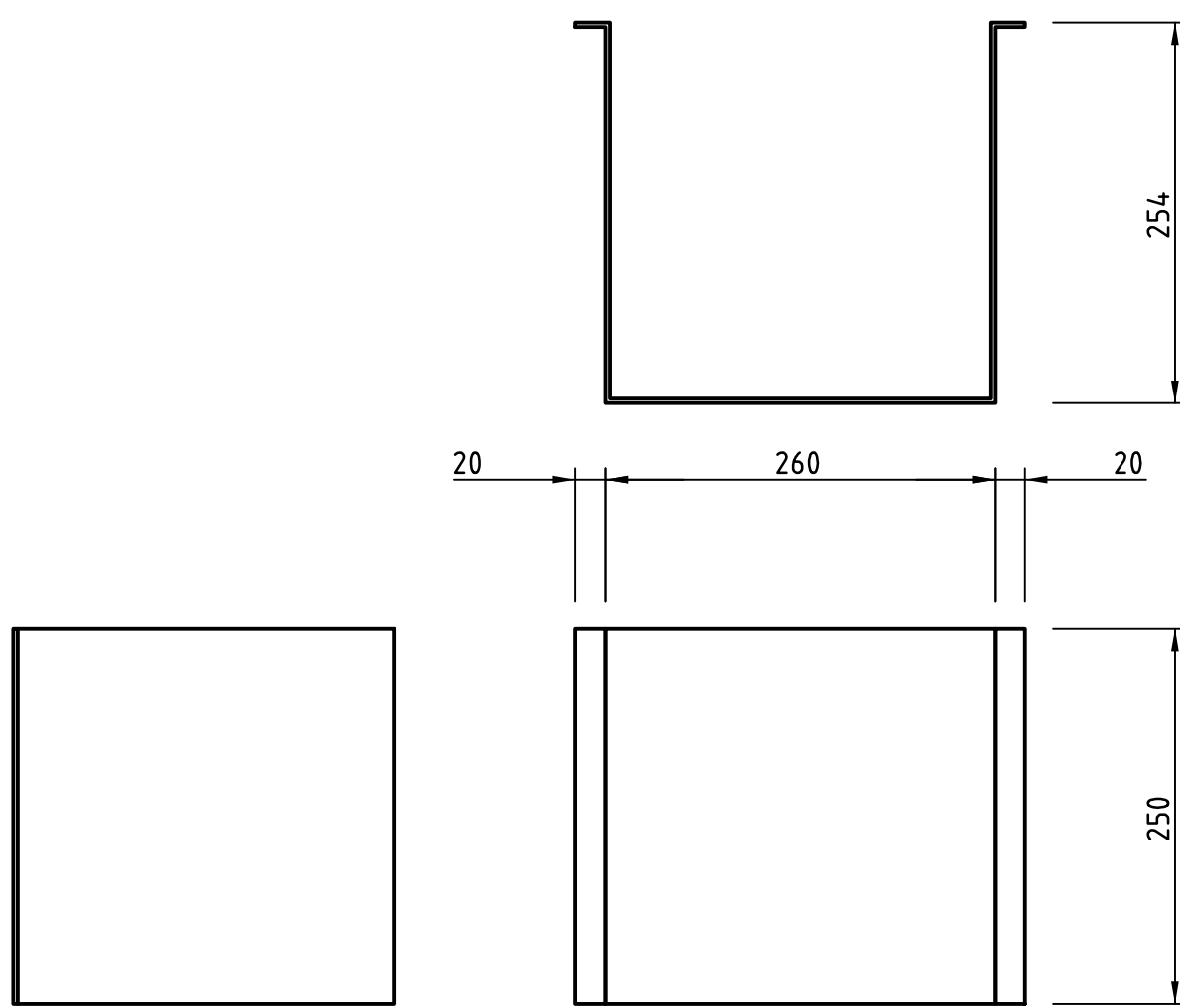
MAIN DISTRIBUTION COMPARTMENT -
CHANGEOVER SWITCH TOP HAT DETAILS



MAIN DISTRIBUTION COMPARTMENT -
CT TOP HAT DETAILS



MAIN DISTRIBUTION COMPARTMENT -
DISTRIBUTION BOARD 2 MAIN SWITCH TOP HAT DETAILS

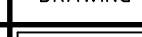



MAIN DISTRIBUTION COMPARTMENT -
DISTRIBUTION BOARD 2 TOP HAT DETAILS

REVISONS					REFERENCES		
	No.	DATE	DESCRIPTION	APP'D		PLAN No.	TITLE
	3	18/5/21	SCOMEC SWITCH CHANGED TO 4 POLE.	P.S.			
	2	7/9/20	UPDATED DRAWING SHEETS.	P.S.			
	1	9/10/13	REVISED DRAWING.	M.B.			
	0	24/9/12	INITIAL ISSUE.	P.J.		A1-52770	STD SPS - PUMP STN 30kW TO 160kW (VSD) - CT METERED - I & C - DRG INDEX

DESIGNED BY:



DO NOT SCALE	GIPPSLAND WATER DRAWING STATUS	STANDARD DRAWING		GIPPSLAND WATER FACILITY CODE XXCPXX	
CERTIFICATION OF COMPLIANCE WITH GIPPSLAND WATER'S DESIGN & DRAFTING REQUIREMENTS.		GIPPSLAND WATER		DRAWING No. A1-52805	REV. 3
DESIGNED: 25/01/2018 - STD DRG		STANDARD SEWERAGE PUMP STATION			
DRAWN: 25/01/2018 - OPT/CT		PUMP STATION 30kw TO 160kw (VSD) - CT METERED			
CHECKED: 25/01/2018 - P STEWART		SUPPLY CUBICLE - MAIN DISTRIBUTION GEAR TRAY & ESCUTCHEON DOOR LAYOUT - 30kw - SHEET 3 OF 3			