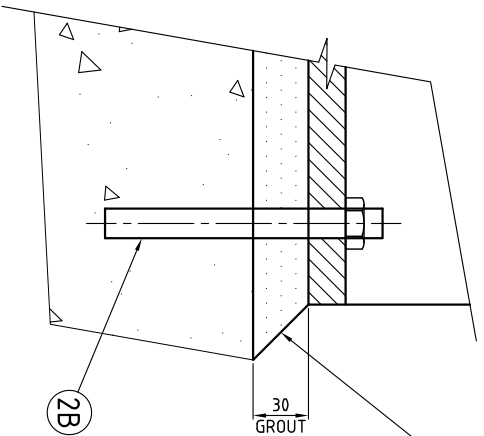


VIEW - A



DETAIL - X
PUMP PEDESTAL SECURING DETAIL

NOTE: FOR ITEMS 1, 5 & 6 REFER DRG. A1-70478

ARRANGEMENT
PUMP INSTALLATION DETAIL

| Item | Description | Qty | Material | Ref Drg | Remarks |
|------|---------------------------|-----|---------------|---------|------------|
| 6B | CHEMICAL ANCHOR M12 | 4 | STAINLESS 316 | - | - |
| 2B | CHEMICAL ANCHOR M16 | 4 | STAINLESS 316 | - | - |
| 1B | PUMP CABLE SPOCK | 2 | STAINLESS 316 | - | TO SUIT |
| 1A | PUMP CHAIN | 2 | STAINLESS 316 | - | SEE NOTE 1 |
| 2 | 100/80 DISCHARGE PEDISTAL | 2 | AS SUPPLIED | - | - |

NOTES

- PUMP MANUFACTURE TO SPECIFY PUMP CHAIN AND SHACKLE
- OBLONGS TO BE LOCATED AT 15m SPACING

REVISIONS

| No. | DATE | DESCRIPTION | APP'D |
|-----|----------|---------------|-------|
| 0 | 28/06/23 | INITIAL ISSUE | GM |
| | | | |
| | | | |
| | | | |
| | | | |

REFERENCES

| PLAN No. | DRAWING INDEX | TITLE |
|----------|---------------|-------|
| A1-70471 | | |
| | | |
| | | |
| | | |
| | | |

DESIGNED BY:

DO NOT SCALE

CERTIFICATION OF COMPLIANCE WITH GIPPSLAND WATER'S DESIGN AND CONSTRUCTION REQUIREMENTS:
DESIGNED: / /
DRAWN: GM
13/02/19
09/04/21 RD/RR

STANDARD TEMPLATE

GIPPSLAND WATER
DRAWING No. A1-70490
REV 0

STANDARD

"LOCATION" SEWER RETICULATION
SEWERAGE PUMP STATION
MECHANICAL & PIPING
PUMP PEDESTAL INSTALLATION