

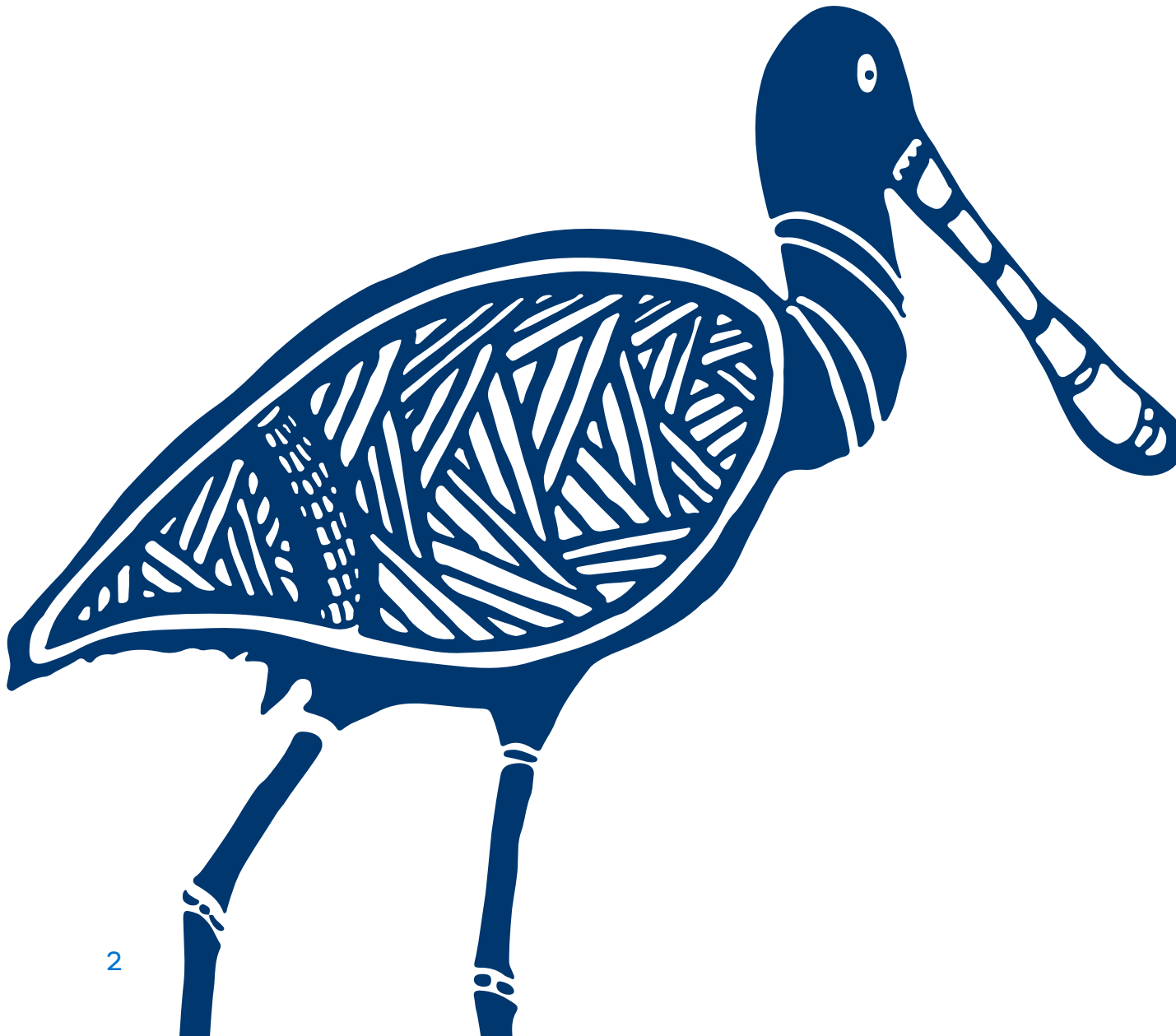
Gippsland
Water

Water and waste services for business and industry

Acknowledgment

We acknowledge the Traditional Owners of the land we work on, the Gunaikurnai people and the Bunurong people, and recognise their strong cultural connection to the land and waterways.

We pay our respect to their Elders, past and present.



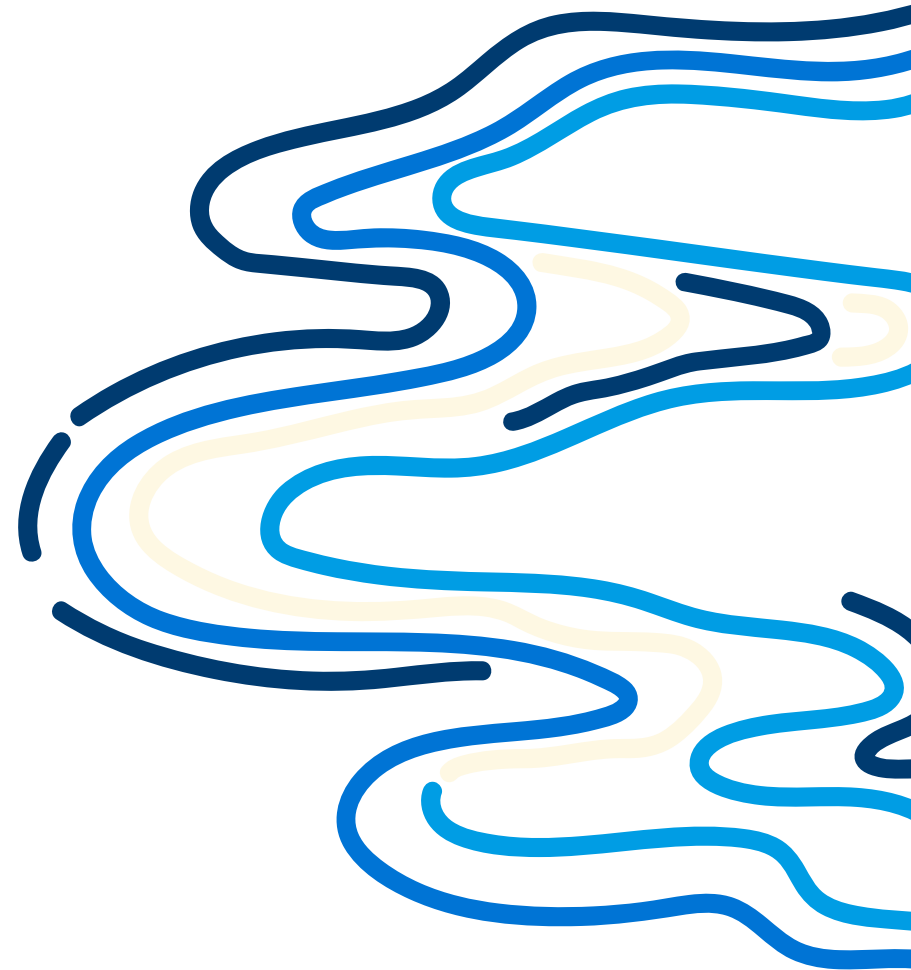


About Gippsland

Just an hour from Melbourne, central and west Gippsland is a unique location perfectly positioned to support new investment.

The region's natural environment, resources, digital connectivity and established transport links have already allowed energy, manufacturing, tourism, food and fibre sectors to thrive, making it a popular place to live, work and invest – a place of progress, new energy and opportunity.

The region is the heart of Victoria's power industry, and recently became a leader in the nation's energy transition after being named Australia's first offshore wind energy zone.





About us

We provide essential water and wastewater services to a population of about 164,000 people across central and west Gippsland.

Our service area covers more than 5,000 square kilometres, across Baw Baw Shire, Latrobe City, Wellington Shire, and South Gippsland.

As a key facilitator of industry activity across our service area, we are committed to continuing our collaboration with business and government and are open to exploring new opportunities.



MORE THAN
2,200km
of water mains,
73 TREATED
WATER STORAGEES
and **68** pump
stations

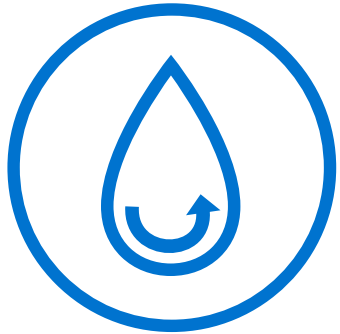


MORE THAN
1,800km
of sewer mains,
and **182**
sewer pump
stations



15
water
TREATMENT
plants

We own and maintain a \$1.7 billion infrastructure network



14

**WASTEWATER
TREATMENT**
plants including
the Gippsland
Water Factory



2

**OCEAN
OUTFALLS**
• McGaurans
Beach and
Delray Beach •



96K

CUSTOMERS
in a population
of **164,034**

We are the entitlement holder of a significant quantity of raw and treated water and are committed to maintaining our position as enablers of economic growth and job creation.

We have sufficient capacity to offer large volumes of raw and treated water. We also have a deep understanding of the needs of existing local industries and new and emerging water consuming sectors.

We work in close partnership with local and state government economic development teams and regional development groups.

We run two commercial businesses, Gippsland Regional Agribusiness and Gippsland Regional Organics at our property in Dutson Downs.



Why invest in Gippsland?

Our region is one of the best-positioned in the country to support water-dependent investment with abundant water resources and strategically located water and wastewater infrastructure.

Other benefits include proximity to the state's existing power grid infrastructure, designated investment precincts, rail and highway connections, land availability and affordability.

Gippsland is also home to a multiskilled workforce, particularly those with experience in the energy and engineering sectors.

As the state's traditional power generation region, we have a highly skilled workforce which is transitioning to emerging sectors like renewable energy, engineering and manufacturing.

Our offering

Up to 20 gigalitres of water available, supported by infrastructure to move it towards Gippsland's key industrial zones.

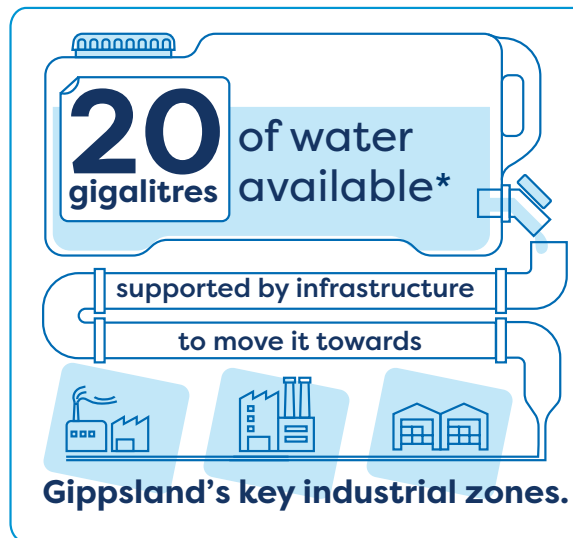
We offer raw and drinking water supply; domestic and industrial wastewater treatment, organic material recycling and agribusiness services.

These services open doors for investment opportunities including manufacturing and food production, horticulture, aquaculture, energy optimisation and renewables, waste, and material recovery.

We have nationally competitive and abundant water resources, wastewater services and strategically located infrastructure for large scale water-dependent industries to thrive near Australia's most populous capital city, Melbourne.

The information below highlights our capabilities, capacity, and \$1.7 billion infrastructure network.

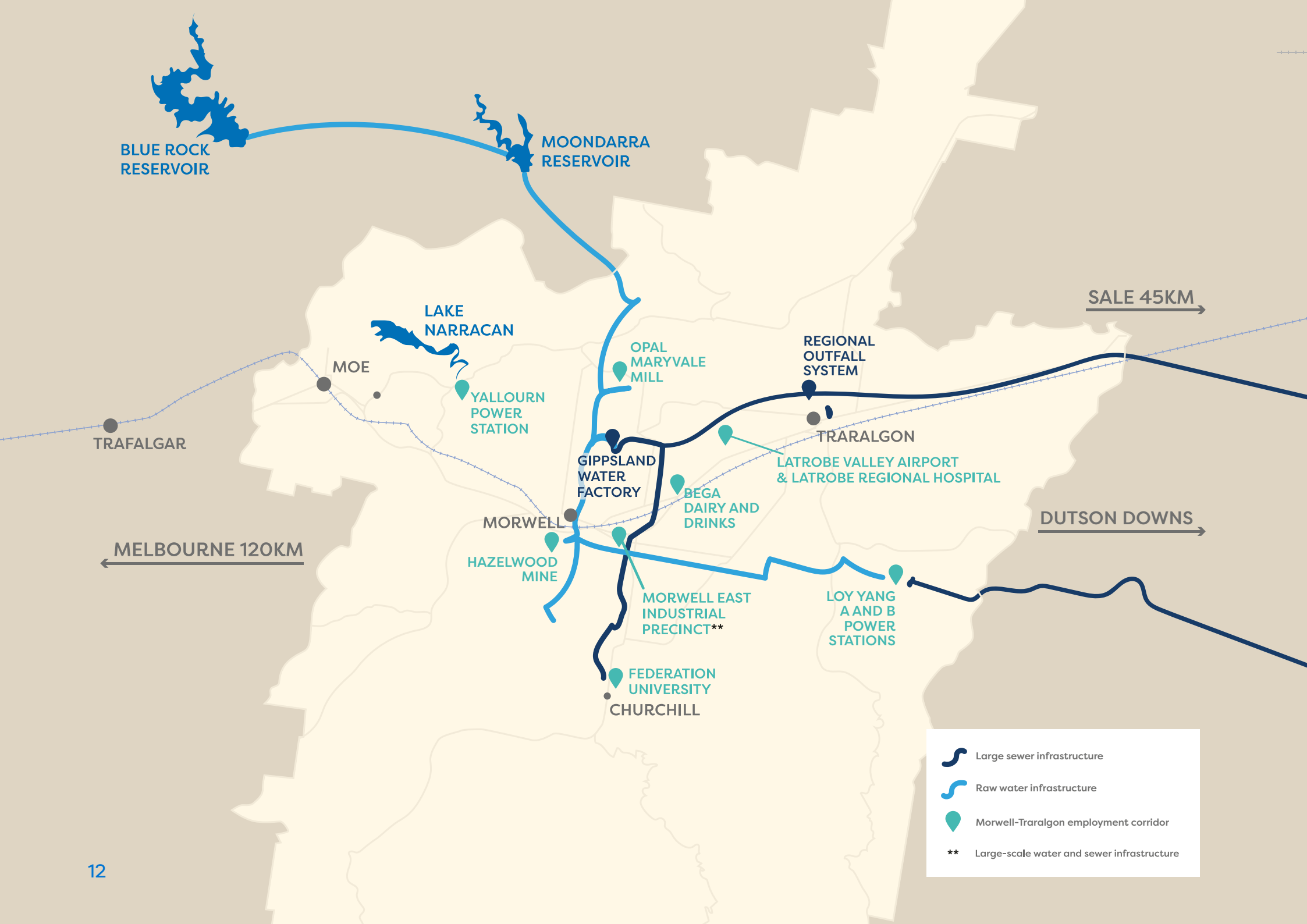
Raw and treated water services






Waste and wastewater management



* dependant on storage levels and other demands



-  Large sewer infrastructure
-  Raw water infrastructure
-  Morwell-Traralgon employment corridor
- **** Large-scale water and sewer infrastructure



Gippsland Water Factory

The Gippsland Water Factory is our largest wastewater treatment plant and one of our largest assets.

It plays a critical role in supporting major local industry, including paper, food, healthcare and power.



It treats up to

20 million litres of

wastewater every day.



The factory services more than



48,000 customers



and **300 local businesses.**

The diagram shows a stylized representation of a business district or industrial park. It includes icons for a shopping cart, a clock, a mail envelope, and various building outlines, all connected by lines that suggest infrastructure and service networks.

Organic recycling

We own and operate Gippsland Regional Organics, a significant EPA-licensed waste management and compost production facility in Dutson Downs. The facility transforms approximately 200,000 tonnes of waste into compost each year.

Many of our compost products have an Australian Standard (AS4454) certification.

Gippsland Regional Organics is surrounded by large land parcels – some are occupied by our other commercial business, Gippsland Regional Agribusiness.

Gippsland Regional Agribusiness operates 12 farming and forestry properties covering across the central Gippsland region – covering approximately 10,000Ha. All properties are managed sustainably with a focus on soil and animal health.



Other publications

- [Gippsland Water Climate Change Strategy](#)
- [Wellington Shire Investment Prospectus](#)
- [Latrobe City Economic Snapshot](#)
- [Baw Baw Shire Business Prospectus](#)
- [Latrobe Valley and Gippsland Transition Plan](#)



Get in touch

Contact our Economic Development team:

Email: ecodev@gippswater.com.au

Phone: 1800 050 500





Gippsland Water

PO Box 348
55 Hazelwood Road
Traralgon VIC 3844

General enquiries 1800 050 500
Faults and emergencies 1800 057 057

ecodev@gippswater.com.au
www.gippswater.com.au

ABN 75 830 750 413